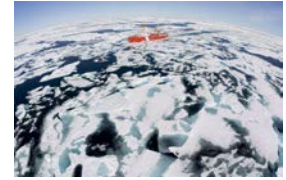


Workshop

Governance of Arctic marine areas with focus on Denmark and Greenland

Room 247 in building 1410 (the Law Department)

Aarhus University, 26 May 2016



9.50 Opening words. [Professor Ellen Margrethe Basse](#), Department of Law, Aarhus University

10.00 Jurisdiction and Governance in the Arctic

Experiences and expectations regarding the submissions from the Kingdom of Denmark to the Commission on the Limits of the Continental Shelf

[Henning Dobson Fugleberg Knudsen](#), *Senior Consultant at Ministry of Foreign Affairs Denmark*

Legal framework for civil liability in the Arctic marine areas

[Anders Møllmann](#), *Associate Professor in Maritime Law, University of Copenhagen*

Challenges for marine security in Arctic sea ice covered areas under climate change regime

[Søren Rysgaard](#), *Professor, Department of Biosciences, Aarhus University, Director of ARC*

11.15 -11.30 Coffee break

Governance of oil and gas activities in the European Arctic marine areas.

[Ellen Margrethe Basse](#), *Professor, Department of Law, Aarhus University,*

[Cécile Pelaudeix](#), *Assistant Professor, Department of Culture and Society, Aarhus University*

Governance of the High seas: the Declaration concerning the prevention of unregulated high seas fishing in the central Arctic ocean

[Cécile Pelaudeix](#), *Assistant Professor, Department of Culture and Society, Aarhus University*

12.30 Lunch

13.30 Arctic actors and their instruments

The Inuit perspectives on Arctic Ocean governance – some examples from Canada

[Natalia Loukacheva](#), *Canada Research Chair in 'Aboriginal Governance and Law' and Associate Professor, Political science department, University of Northern British Columbia*

Private actors in the regulation of Arctic shipping

[Katerina Peterkova](#), *Assistant Professor, Department of Law, Aarhus BSS, AU*

Impact benefit agreements in Greenland

[Bent Ole Mortensen](#), *Professor, Department of Law, University of Southern Denmark*

Local receptions of offshore oil exploration on the northwest coast of Greenland

[Pelle Tejsner](#), *Assistant Professor, AU*

14.40-15.40 Open discussion and concluding remarks

15.40 – 17.00 Coffee and drinks