



Centerledelse:

Bo Elberling, Centerleder, Københavns Universitet

Carsten Suhr Jacobsen, GEUS

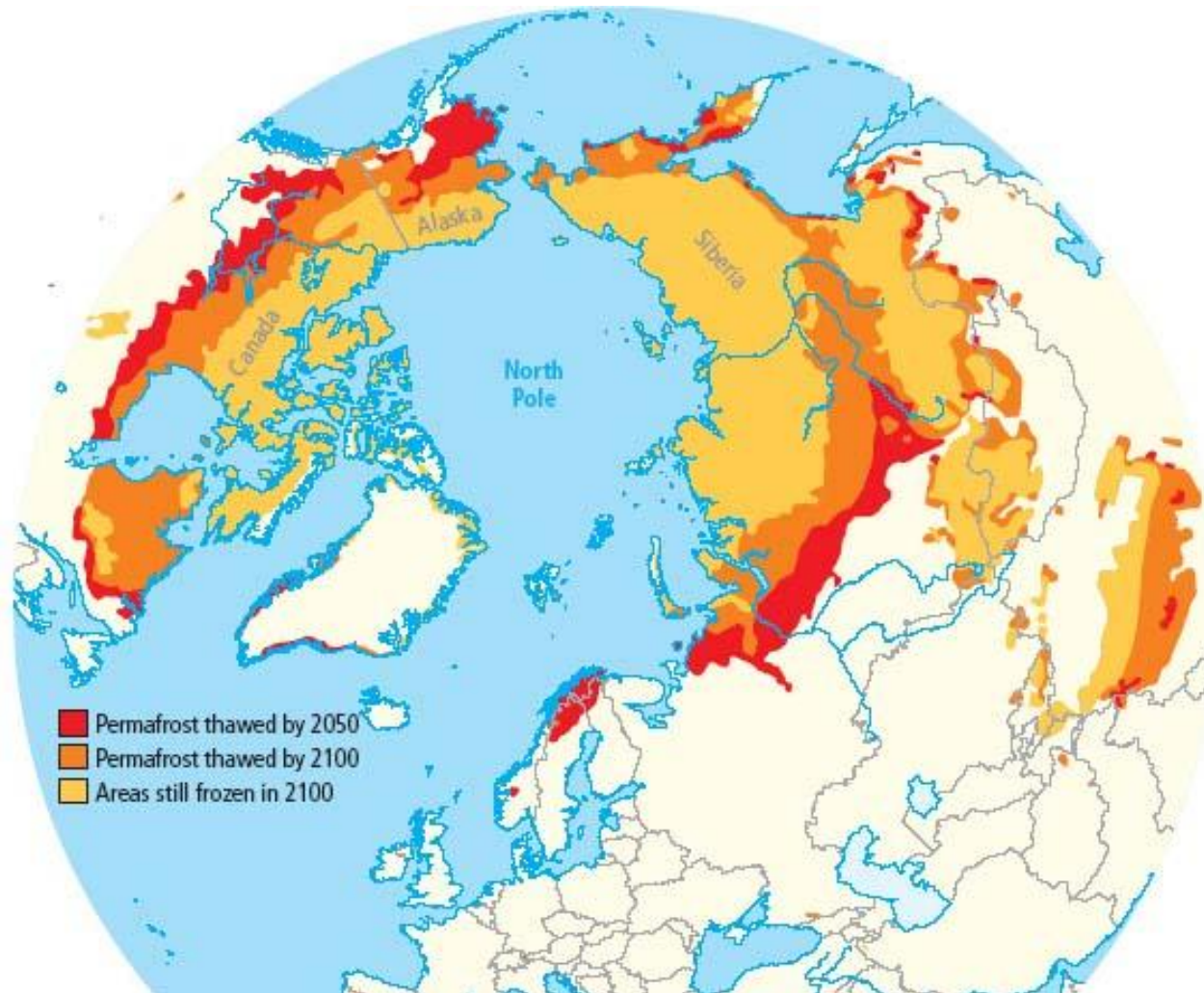
Anders Michelsen, Københavns Universitet

Anders Priemé, Københavns Universitet

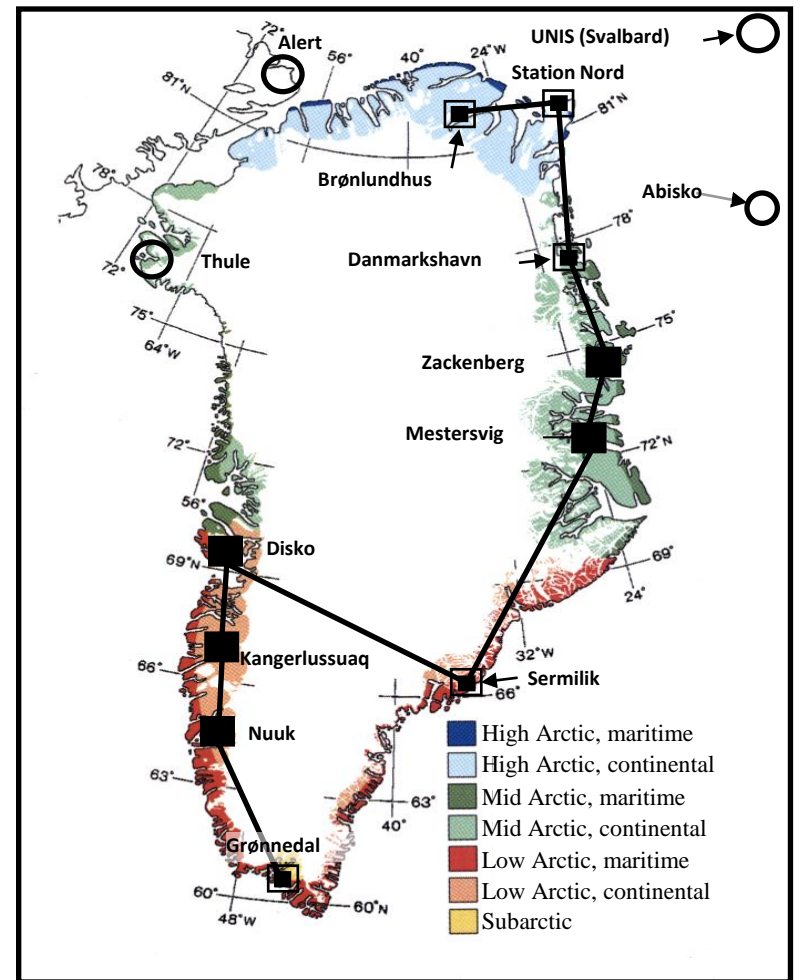
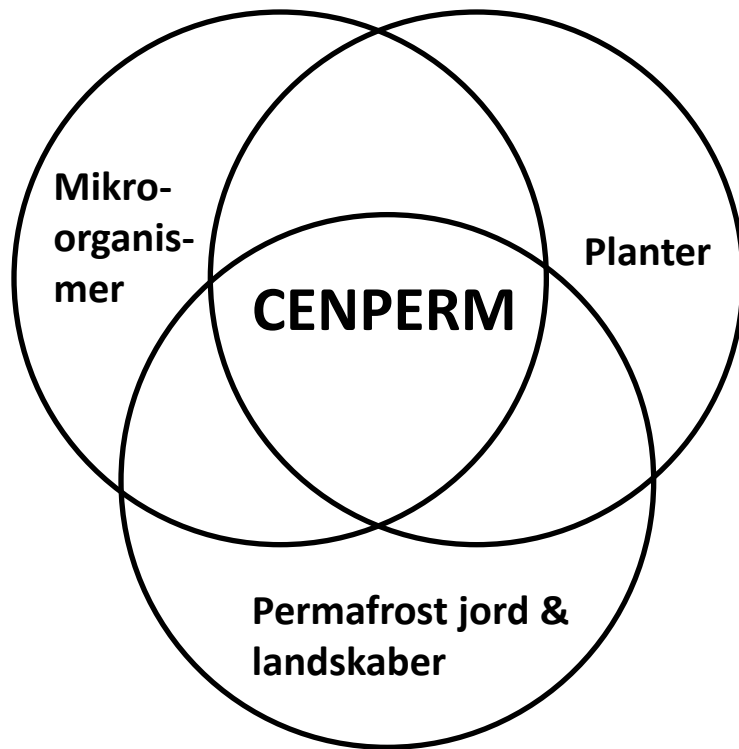


Danmarks
Grundforskningsfond
Danish National
Research Foundation

Permafrost optøning



Multidisciplinær tilgang



○ Collaborating sites

■ Key CENPERM sites

□ Other CENPERM sites

Beskrive landskaber



Etablere klimastationer



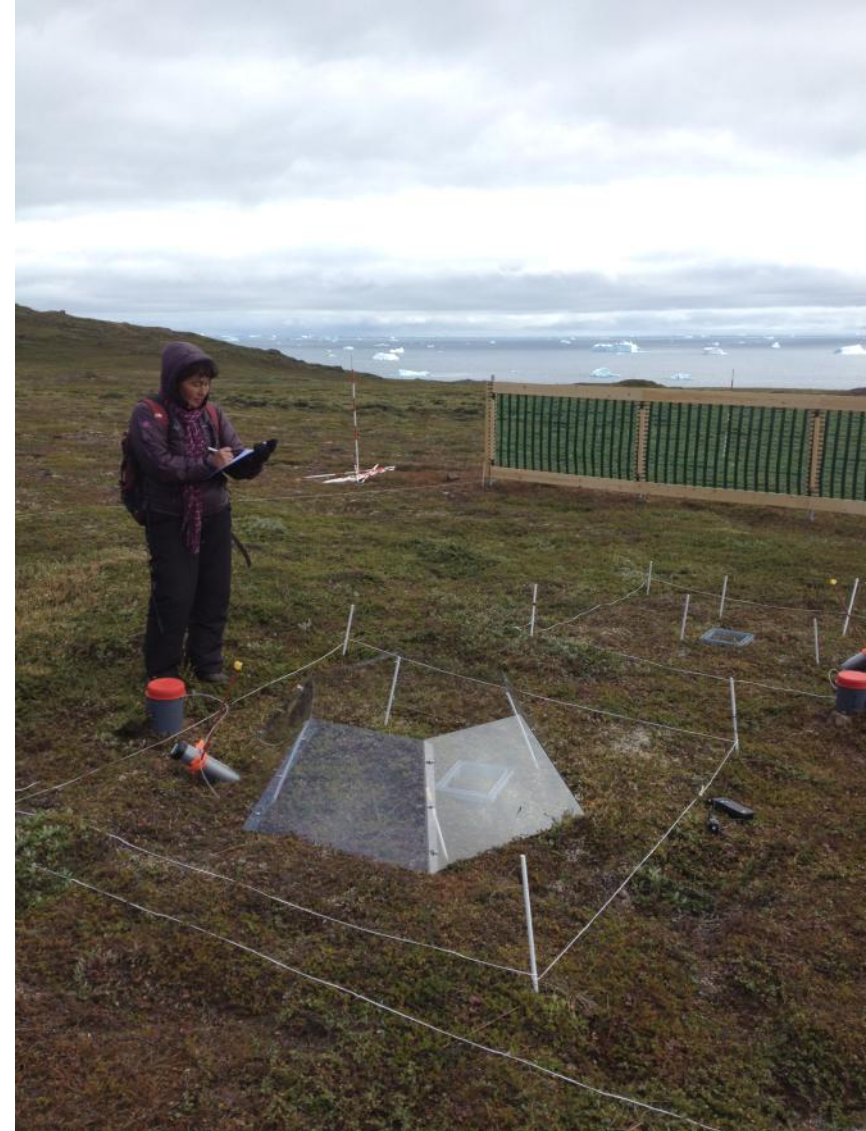
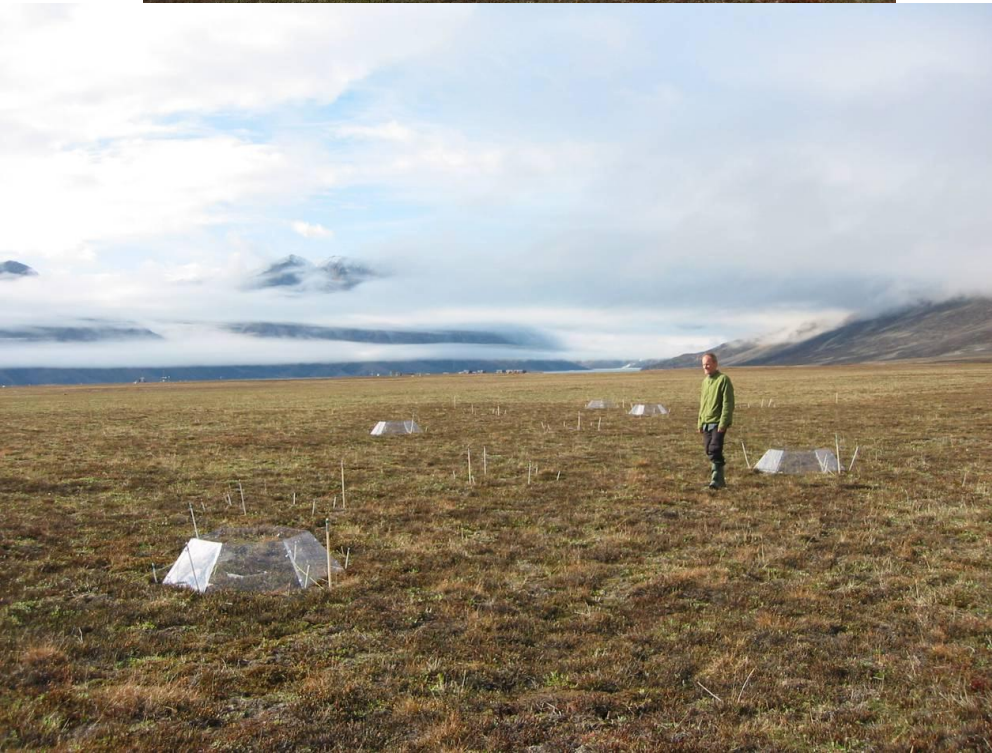
Karakterisere permafrost



Måle gas fluxe



Manipulere økosystemer



Tak for opmærksomheden



www.cenperm.ku.dk