

Arctic activities and initiatives at University of Southern DK



Ronnie N Glud,



Emma Hammerlund:

Paleo-settings derived from the Sirius Rasmussen

Magnus Wahlberg & Lee Miller:

Bioacoustic behavior marine mammals & human impacts

Frank Bo Jensen:

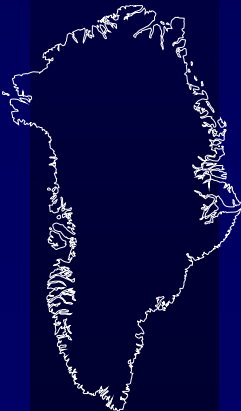
Respiration physiology and signal molecules in diving seals

Marianne Holmer:

Seagrasses in the Arctic

Ronnie N Glud:

Marine C & N cycling and climate change



Arctic activities and initiatives at University of Southern DK



Ronnie N Glud,



Sept -2010 :
Research group for Biogeochemistry
and Climate Change

3 Post docs
7 Ph D
3 Master-students
1 Technician
Secretary assistance

Prime funding sources:

SDU's Globaliseringsmidler
Grønlands Klimaforsknings Center
Danmarks Grundforskningsfond
EU – Excellence Research Center
NERC – UK
FNU- DK

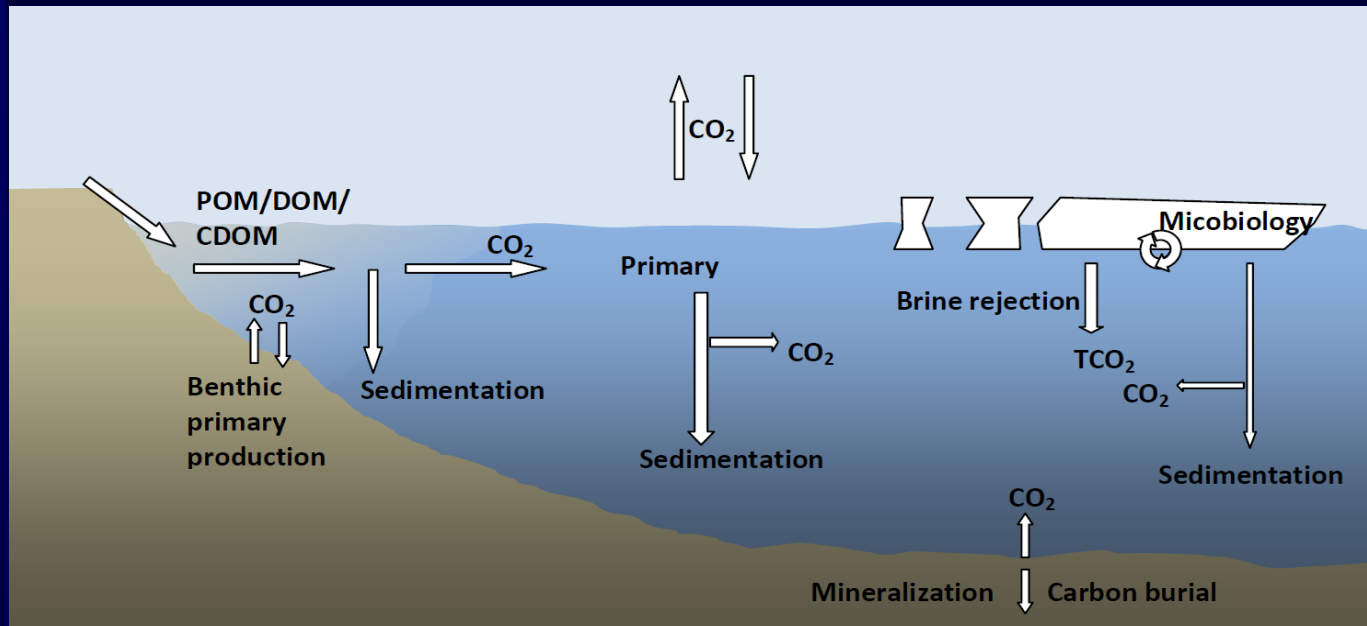
CERC - Arctic geomicrobiology and Climate Change



Arctic activities and initiatives at University of Southern DK

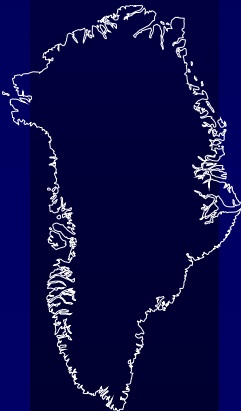


Ronnie N Glud,



Central research questions:

- 1) How does climatic changes affect ecosystem function, biological productivity, and carbon and nutrient cycling in coastal and open ocean systems?
- 2) How does sea ice growth and melt influence abiotic atmospheric CO₂ drawdown?
- 3) What are the biogeochemical function and diversity of sea ice associated microbial communities?



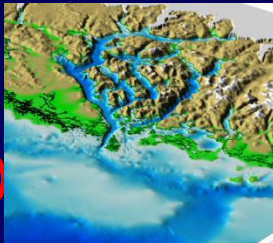
Arctic activities and initiatives at University of Southern DK



Ronnie N Glud,

MOU between GINR and SDU

- Exchange of personnel and students
- SDU-BI financially support the basic logistics at GINR
- SDU-BI each year sponsor 1 PhD student (2/3 stipend)
- SDU-BI each year sponsor 1 MSc student (50.000)
- SDU-BI personnel get access to infrastructures and facilities at GINR



Arctic activities and initiatives at University of Southern DK



Ronnie N Glud,

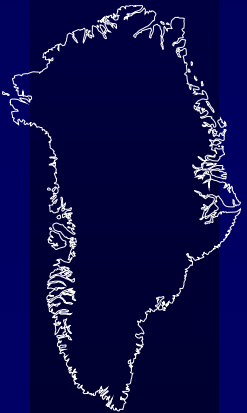
Dana –TG Nielsen & S Rysgaard & (2009)



JC Ross – Scottish Association for Marine science
R Leaky & RN Glud (2010)



Polar Stern - AWI
A Boetius, F Wenzhoefer, RN Glud (2012 & 2014)



Arctic activities and initiatives at University of Southern DK



Ronnie N Glud,

CERC - Arctic geomicrobiology and Climate Change University of Manitoba



Annual cruises Canadian arctic and the Baffin Bay



SERF – a large scale – sea-ice tank at University of Manitoba

Arctic activities and initiatives at University of Southern DK



Ronnie N Glud,

The close collaboration between "*Biogeochemistry and Climate change*" and GINR, CERC, & ARC (Aarhus) is science motivated!

But also by facilitation of knowledge exchange - (2011 - >750 work days in Nuuk and >50 days of training and course activity at SDU-BI)

SDU will sincerely work to further strengthen the existing relations – and to the newly formed ARC-center.

